

G1.01

SHEET DESCRIPTION:  
CODE PLAN

PROJECT NUMBER: 22010.00

SHEET ISSUES:  
DATE: 12/15/2022  
BY: [Redacted]  
APP: [Redacted]

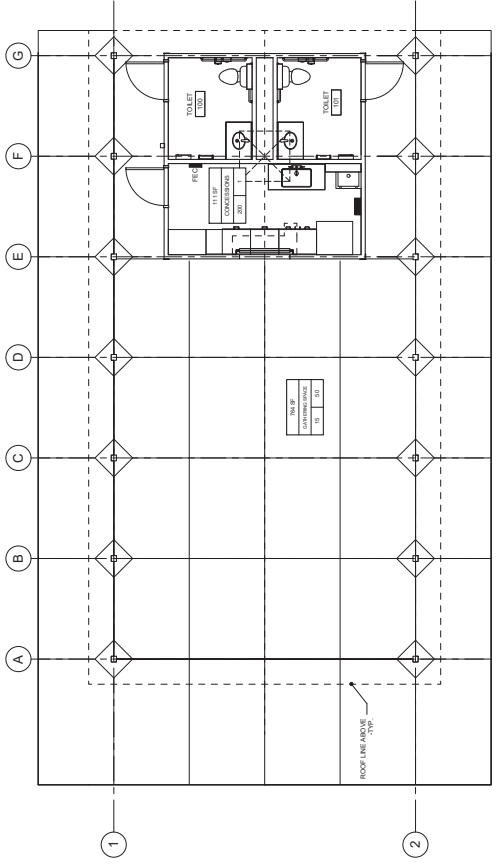
ROSCOE TOWNSHIP MULTIPURPOSE  
RECREATIONAL PAVILION  
4522 HONGONGAH ROAD  
ROSCOE, ILLINOIS 61073

GRAPHIC SCALE  
1" = 10'-0"  
CAUTION: THESE DIMENSIONS ARE NOT  
TO BE RELIED UPON FOR CONSTRUCTION  
PRINTED TO SCALE

CONSULTANT

ELECTRONIC MEDIA AND COPYRIGHT NOTICE  
THIS DOCUMENT IS THE PROPERTY OF SAGE MEDIA GROUP ARCHITECTS AND ENGINEERS, P.C. (SAGE MEDIA GROUP ARCHITECTS AND ENGINEERS, P.C.). IT IS TO BE USED ONLY FOR THE PROJECT AND SITE SPECIFICALLY IDENTIFIED IN THE TITLE BLOCK. IT IS NOT TO BE REPRODUCED, COPIED, DISTRIBUTED, OR TRANSMITTED IN ANY FORM OR BY ANY MEANS, ELECTRONIC OR MECHANICAL, INCLUDING PHOTOCOPYING, RECORDING, OR BY ANY INFORMATION STORAGE AND RETRIEVAL SYSTEM, WITHOUT THE EXPRESS WRITTEN PERMISSION OF SAGE MEDIA GROUP ARCHITECTS AND ENGINEERS, P.C. ANY UNAUTHORIZED USE OF THIS DOCUMENT IS STRICTLY PROHIBITED. SAGE MEDIA GROUP ARCHITECTS AND ENGINEERS, P.C. SHALL BE HELD HARMLESS FROM ANY AND ALL LIABILITY, INCLUDING REASONABLE ATTORNEY'S FEES AND COSTS, ARISING FROM ANY SUCH UNAUTHORIZED USE. THIS NOTICE SHALL BE DEEMED TO HAVE BEEN CONSENTED TO BY THE USER OF THIS DOCUMENT.

SageMedia Group Architects  
100 North Clark Street  
Rockford, Illinois 61101  
www.sagemedia.com  
Phone: 815.998.9399  
Fax: 815.998.9391  
Illinois Registration Number: 184-020233



1 CODE PLAN  
1/4" = 1'-0"

CODE PLAN LEGEND

SP	—	FOOTPRINT FOOTPRINT
WALL	—	FUNCTION OF SPACE
DOOR	—	OCCUPANT LOAD